

Mid Calder Primary School

School Handbook



2026/2027



Contents

- Section 1** **School Information**
West Lothian Council Mission Statement
West Lothian Council Values
School Aims
- Section 2** **Standards**
2.1 Attendance
2.2 Ethos and Behaviour
2.3 School Uniform
- Section 3** **Ethos**
3.1 Equality, Equity and Fairness
3.2 Partnership and Communication with Parents
3.3 Parent Councils
- Section 4** **Curriculum**
4.1 General
4.2 Instrumental Tuition
4.3 Use of the Internet
4.4 Assessment and Reporting
4.5 Supporting our Learners
- Section 5** **Admission procedures**
5.1 Admission Procedures
5.2 New Entrants to P1
5.3 Transfer from P7 to Secondary School
5.4 Extra Curricular Activities
- Section 6** **Health & Safety and Pupil Welfare**
6.1 Medication in Schools
6.2 Emergency Contacts and Arrangements
6.3 Meals and Milk
6.4 Security
6.5 Photography
6.6 Child Protection Guidelines
6.7 Playground Supervision
6.8 Transport
6.9 Car Park
6.10 Requested Early Release of Pupil
6.11 Data sharing
- Section 7** **Communication, Feedback, Concerns, Complaints and Comments**
7.1 Communication
7.2 Feedback, Concerns and Complaints
7.3 Comments



Welcome to Mid Calder Primary School

On behalf of Mid Calder Primary School, I am very pleased to welcome all our new pupils and their parents. I am delighted that you have chosen Mid Calder and look forward to working in partnership with you.

A Curriculum for Excellence sets out clearly the purpose of our Curriculum with Children and young people at the centre of their learning provision. Our aspiration is that they should all develop the four capacities to become:

Successful learners
Confident individuals
Responsible citizens
Effective contributors
With:



Successful learners

- enthusiasm and motivation for learning
- determination to reach high standards of achievement
- openness to new thinking and ideas

and able to:

- use literacy, communication and numeracy skills
- use technology for learning
- think creatively and independently
- learn independently and as part of a group
- make reasoned evaluations
- link and apply different kinds of learning in new situations

Confident individuals

With:

- self respect
- a sense of physical, mental and emotional wellbeing
- secure values and beliefs

and able to:

- relate to others and manage themselves
- pursue a healthy and active lifestyle
- be self aware
- develop and communicate their own beliefs and view of the world
- live as independently as they can

- assess risk and take informed decisions
- achieve success in different areas of activity

Responsible citizens

With:

- respect for others
- commitment to participate responsibly in political, economic, social and cultural life

and able to:

- develop knowledge and understanding of the world and Scotland's place in it
- understand different beliefs and cultures
- make informed choices and decisions
- evaluate environmental, scientific and technological issues
- develop informed, ethical views of complex issues

Effective contributors

With:

- an enterprising attitude
- resilience
- self-reliance

and able to:

- communicate in different ways and different settings
- work in partnership and in teams
- take the initiative and lead
- apply critical thinking in new concepts
- create and develop
- solve problems

Our school badge with the Latin '*Spero Meliora*'... to hope for better things creates a very positive vision within our school; all members of our learning community support and lead each other and themselves to be successful, optimistic and adventurous with their learning while being respectful to themselves, their environment and their Community.

We aim to prepare all our young people for their future. Our learning environment aims to stimulate, challenge, support and provide opportunities to develop life skills. We celebrate attainment and achievement gained not only in school but within the children's personal lives during a variety of school wide celebration events.

This handbook will only give you a 'snapshot' of life at Mid Calder and visiting the school will provide a fuller picture. You are very welcome to come and see us at work – just telephone to arrange a visit. Someone is always very willing to show you round and answer any questions.

You can find out more about our school by visiting our school website.

<https://midcalderprimary.westlothian.org.uk/>

We look forward to a happy and successful experience working with you and your child.

Mr Taylor, Head Teacher (Acting)

In this handbook, parent means any person with parental responsibility for the child.

Section 1: School Information

Mid Calder Primary is a non-denominational primary school serving the village of Mid Calder and the surrounding community. At present the school roll is 195 pupils as well as a 30:30 nursery provision. The staff consists of the Head Teacher, Principal Teacher and twelve teaching staff.

School Address **Mid Calder Primary School**
MID CALDER
Livingston
West Lothian
EH53 0RR

Telephone : 01506 882092

Website : <https://midcalderprimary.westlothian.org.uk/>

Email : wlmidcalder-ps@westlothian.org.uk

All visitors must report to the school office on arrival and sign the Visitors' Book if visiting any of the class areas.

Our Catchment Area

The school's catchment area consists of the village of Mid Calder, both conservation village itself and the housing estates to the west of the village.

The Parents' Charter gives parents the right to request a place for their child at a school of their choice and, if places are available, children from outside the catchment may also be enrolled. A number of children enrolled at the school are from out with the school's catchment area, as a result of parental choice. Mid Calder Primary School admits pupils of any gender type. All pupil placement must be done through the appropriate Council procedures via Pupil Placement: <https://www.westlothian.gov.uk/article/32379/Apply-for-nursery-and-school-places>

In the case of children transferring from another school, it is advisable, where possible, that parents visit the school prior to the transfer. It is helpful to make an appointment to ensure that the visit is as satisfactory as possible. Arrangements of visits can be made by contacting the school office.

Accommodation and Facilities

The school is housed in a main building, built in 1977 and refurbished in June 2004. It comprises fourteen class bases, support for learning base, music room, hall/dining area, drama area, general purpose rooms, toilets, kitchen serving area, staffroom, medical room and offices. The grounds consist of hard and grassed areas, a small landscaped garden and our 'Wild Connections' school woodland next to the school.

A Nursery Class is housed in an adjoining building within the school campus. The Nursery Class is staffed by an Early Years Officer, five Nursery Nurses and two Pupil Support Workers and is built to accommodate 30 children in the morning and up to 30 children in the afternoon. Children are

allocated either a morning or an afternoon placement, or can attend two full nursery days. The nursery currently operates under the model of the 52 working week year, closing for public holidays only.

The Primary School Day

Monday to Thursday:

P1 – P7: 8.45am – 3:05pm
Breaktime: 10:30am -10:45am
Lunchtime: 12:10 -12:50 (P3-P5) 12:30pm - 1.10pm (P1+P2)
Hometime: 3:05pm

Friday

P1 – P7: 8.45am – 12:25pm
Breaktime: 10:30am -10:50am
Hometime: 12:25pm

Parents will be informed via GroupCall (the school email system for contacting parents) when children are likely to be late e.g. if an outing or sporting event is taking place that will extend beyond the normal closing time. Parental consent forms (EE2 forms) will be issued for signature before any pupils are taken out of school but a general consent form for short local visits will be issued at the start of each session to all new parents. Please make sure the school has up to date emergency contact information.

The Nursery Day

**Monday - Thursday: Morning:
Core hours - 7.52– 12.30pm**

**Afternoon:
Core hours – 12.30pm – 6.14pm**

**Full Day Children: 8.00am-6.00pm for 2 allocated days
Plus Half day either 12.45pm-4.05pm or Friday am (7.52-12.47 or 8am -11.20)**

Friday: Morning only – 7.52-12.47 or 8am – 11.20

West Lothian Council Mission Statement

“Striving for excellence...working with and for our communities.”

West Lothian Council Values

- Focusing on customers’ needs
- Being honest, open and accountable

- Providing equality of opportunities
- Developing employees
- Making best use of resources
- Working in partnership

School Aims : Mid Calder Primary School Aims

- We aim to prepare all our young people with the skills, knowledge and attributes for the challenges of the future.
- We aim to create a nurturing environment for our pupils to thrive.
- We aim to create a learning environment which stimulates, challenges, supports and provides opportunities to develop independent learners.
- We aim to deliver an innovative and creative curriculum which is relevant to our children's lives and promotes personalisation and choice.
- We aim to provide high quality learning and teaching experiences to enable every child to reach their full potential.
- We aim to foster our core values through creating a positive and welcoming school ethos.
- We aim to support each child's skills and talents through recognition and celebration of individual achievements.
- We aim to promote effective partnerships between home, school and the wider community developing a sustainable future for Mid Calder.

Mid Calder Primary School Mission Statement

The Latin '*Spero Meliora*'... to hope for better things creates a very positive vision within our school; all members of our learning community support and lead each other and themselves to be **Successful**, **Optimistic** and **Adventurous** with their learning while being **Respectful** to themselves, their environment and their Community.

'Together we SOAR'

Attainment and Achievement

It is important to recognise and support the achievements of all children both in and out of school. This can help to develop their confidence and motivation for learning. It can also help them to reflect on their own learning and plan appropriate next steps.

Range of achievement

We recognise that learning also takes place outside the classroom, at home and in the wider community.

Achievement covers learning in other areas of the life of the school, and in the variety of activities children and young people are involved in, for example: hobbies and interests, such as participating in a sport or club, helping others, activities they undertake in the life of the school, such as Eco Schools or Buddying. We use our SOAR Values awards, Skills Builder Awards and our 'Magical Moments to acknowledge achievements in these areas.

Through these activities, they develop important skills for learning, skills for life and skills for work that can be of real value to them as they grow up.

We need to recognise the full range of achievements and help our children and young people understand the skills they have. It is important that they are able to demonstrate and describe these skills to others, and build on these skills. It is important that you encourage your child to let their school know about their achievements beyond the classroom.

Section 2: Standards

Mid Calder Primary School Standards

High standards of responsible and respectful behaviour are promoted and supported at Mid Calder.

Our Positive relationships policy is based on the three simple rules of **READY, RESPECT** and **SAFE**.

2.1: Attendance

It is essential that parents' call the school office to report any absence of pupils. Please do so before the start of the school day, if possible. Under the Council's Safe Arrivals at School Policy, it is essential that the school knows that all pupils are safe and accounted for. Should children be absent from school and the parent has not made contact, the office staff will contact the parent for information, via telephone or Groupcall. Should attendance levels give cause for concern, a referral will be made to the Children and Young Peoples' Team.

Please help us develop in your child a regular habit of good time keeping. If circumstances arise when your child will be unavoidably late please provide a note of explanation.

The school enters pupil absence electronically using codes for particular reasons for absence. To ensure an accurate record is kept it is important that, should your child be absent, you provide an explanation for that absence either by letter or by telephone. *Our school has a system which sends out an automated text message to a mobile telephone in cases of unexplained absence. The text is repeated regularly until answered. Parents/carers and schools must work in partnership in order to benefit from early notification of unexplained absence from school. Parents are urged to opt into this system.*

The Scottish government has issued a directive informing local authorities that, due to the impact absences during term-time have on children's learning, any such absences will be recorded as unauthorised. Family holidays should therefore be taken out-with term times. If, in exceptional circumstances, you wish to take your children out of school, you must make your request to the Head Teacher in writing.

If you become aware that your child may be absent from school for a considerable length of time, due to illness or admission to hospital, you are requested to inform the school as soon as possible.

2.2: Ethos and Behaviour

We are very proud of our school and hope to make you feel welcome at all times by fostering a positive atmosphere of good relationships between staff, pupils and yourselves. We have high expectations of achievement and behaviour of our pupils, which we maintain by praising our pupils' efforts and commitment to school and to one another. We hope that you will help us to further develop good partnerships with you and that you will feel confident to approach the school at any time.

Children learn to develop values and positive attitudes towards themselves and others in many aspects of the curriculum, which in turn contribute to their personal and social development. Our school works hard to build confidence and self-esteem and provide opportunities for children to contribute to the whole school community. Much of their development in these areas, helps to lay the foundations for becoming responsible citizens of the future.

We promote and expect a high standard of responsible behaviour from pupils towards staff, other pupils and towards their surroundings.

Our school values are:

Successful: I try my best individually and as a team member.

Optimistic: I have a positive growth mindset towards everything I do, even if things are difficult or if at times make mistakes.

Adventurous: I do not shy away from trying new things and look for opportunities to challenge my learning.

Respectful: I am considerate and courteous to myself, others and the environment.

2.3: School Uniform

Each school has its own dress code, for the whole school, based on the Council's policy which all pupils will be expected to keep to.

Mid Calder uniform consists of grey or black trousers/skirt, white shirt/blouse and a red and silver striped school tie. Alternatively, a red polo shirt and silver grey sweatshirt are equally acceptable. In summer, a red and white checked gingham dress is a practical alternative for girls in fine weather. Items of uniform are available from the school website including fleece jackets bearing the school logo.

<https://www.border-embroideries.co.uk/schools/mid-calder.html>

Through the School Parent Council, we are pleased to offer a **Uniform Swap Shop** to support our families. A wide selection of *nearly new, well-cared-for school uniform items* is available **free of charge**.

If you are looking for specific items or sizes, please do not hesitate to contact the school office or the Parent Council, who will be happy to help.

We recognise that the cost of living continues to rise, and as a school community we are committed to helping reduce the Cost of the School Day (COSD) wherever possible. This initiative aims to ease the financial pressure on families while promoting sustainability and reuse.

We hope that families will find this resource helpful in reducing the cost of school uniforms.

For PE, a white t-shirt and black gym shorts are required. In line with West Lothian Council dress code policy for school children, we ask that pupils do not wear sports tops associated with particular football teams. Children are encouraged to keep PE kit and soft shoes in school for use at any time. In the interests of safety and security, the wearing of jewellery is discouraged, particularly hooped and dangly earrings.

We recommend that all articles of clothing are clearly marked with your child's name. This makes it much easier to reunite children with misplaced clothing.

The School and Council will not be responsible for loss of or damage to pupils' clothing and personal belongings including mobile phones and devices. There should be no mobile phones in school. P4 to P7 pupils will have the opportunity to bring their own device to school to aid their learning. However, Parents and pupils must agree and sign to the contents of our BYOD (Bring Your Own Device) policy to show acceptance of the terms and conditions of the use of personal electronic devices in school before pupils are permitted to use their own device. Valuable items, including jewellery and unnecessarily expensive articles of clothing and toys should not be brought to school.

School Clothing Grants are available to parents in receipt of a qualifying benefit; application forms are available from the school or online. <https://www.westlothian.gov.uk/article/43281/School-Clothing-Grants-Free-School-Meals-Milk>

Section 3: Ethos

3.1: Equality, Equity and Fairness

All pupils have the right to enjoy opportunities and activities, regardless of their background, race, gender or religion, so that they will be given the freedom to develop their full potential without constraint.

The Scottish Attainment Challenge is about achieving equity in educational outcomes, with a particular focus on closing the poverty-related attainment gap. Equity can be achieved by ensuring every child has the same opportunity to succeed. The First Minister launched the Scottish Attainment Challenge in February 2015 to bring a greater sense of urgency and priority to this issue. It is underpinned by The National Improvement Framework, Curriculum for Excellence, Getting it Right for Every Child (GIRFEC) and United Nations Convention on the Rights of the Child (UNCRC).

The Scottish Attainment Challenge provides focused and targeted improvement activity in literacy, numeracy and health and wellbeing across Scotland. It also supports and complements a broad range of initiatives and programmes to ensure that all of Scotland's children and young people reach their full potential.

Our aim is promote self-esteem and a positive self-image in every pupil. Self-respect and respect for others is a priority. We offer a diverse curriculum, which addresses the needs and opinions of all. We aim to maintain an environment which is free from bullying, racism and other forms of discriminatory behaviour. We value your support in maintaining this ethos.

The Cost of the School Day: the Cost of the School Day (COSD) was set up in Glasgow city to identify cost barriers that prevent some children from taking part in school experiences and the actions that can be taken to address them. At Mid Calder we are continuously looking at ways to reduce the cost of the school day. We always welcome new ideas and creative ways to help reduce costs for families. Please get in touch if you feel there is something else we can do.

3.2: Partnership and Communication with Parents

All West Lothian schools are committed to the process of personal learning planning. This process is an ongoing discussion between teacher and pupils about how the next steps in learning are to be achieved. There is often a simple record of the discussion and school are developing ways of sharing these with parents and involving parents in the process.

West Lothian Schools operate an open, responsive policy with regard to questions or concerns that parents may have. Should you have concerns or complaints regarding the service provided you should raise these with the Head Teacher in the first instance.

Newsletters are issued roughly once a month and curricular evenings are arranged once per term. Parents' nights are twice in the school year. The first of these are usually held towards the end October or beginning of November, with the second one usually around March. Your comments and suggestions on the work in school and the service provided for you and your child are welcomed.

We will ask from time to time for your feedback regarding various things. This might be an Evaluation forms or questionnaire and written feedback at the time. We make sure that we listen to what you say about the service provided for you and your child and do our best to make improvements for all.

3.3: Parent Council

A Parent Council is a group of parents selected by members of the Parent Forum to represent all the parents at a school on a voluntary basis. All parents/carers in a school are automatically members of the Parent Forum of that School.

The purpose of a Parent Council is to:

- To support Parents and Families.
- To communicate with, and between all parents (Parent Forum).
- To build a strong partnership with the school and Parents
- To develop a partnership with the wider community.
- To campaign on behalf of the Parent Forum (and represent its views) and the school community.

Every parent can expect to:

- receive information about what their child is learning along with information about events and activities at the school.
- receive advice/help on how they can support their child's learning.
- be told about opportunities to become involved in school.
- have a say in electing a Parent Council to work on behalf of all parents.

Parent Councils operate in accordance with a local constitution. Parents can put themselves forward to be members of the Parent Council in accordance with that constitution.

Further information can be found on the Connect (supporting partnerships in Education) website website <https://www.connect.scot/>

Section 4 : Curriculum

4.1: General

Every child and young person in Scotland is entitled to experience a broad general education, as described by the Scottish Government's Curriculum for Excellence.

The curriculum is organised into eight broad categories.

Curriculum for Excellence

The 3-18 curriculum aims to ensure that all children and young people in Scotland develop the attributes, knowledge and skills they will need to flourish in life, learning and work. The knowledge skills and attributes learners develop will allow them to demonstrate the four key capacities – to be successful learners; confident individuals; effective contributors and responsible citizens.

There are six curricular levels:

Level	Stage
Early	The pre-school years and P1, or later for some
First	To the end of P4, but earlier or later for some
Second	To the end of P7, but earlier or later for some
Third and Fourth	S1 to S3, but earlier for some
Senior Phase	S4 to S6 in school/college/other types of study, until the age of 18

Learners will experience a broad general education till the end of S3, then options in the senior phase. The broad general education covers expressive arts, health and wellbeing, language, mathematics, religion and moral education, sciences, social studies, technologies. All staff have responsibility for literacy, numeracy and health and wellbeing.

Within each curriculum area, there are a number of organisers, or areas of study:

Expressive Arts

Includes art and design, dance, drama and music. Your child will get the chance to find out about and express their feelings and emotions and those of others.

Health and Wellbeing

Mental, emotional, social and physical wellbeing, planning for choices and changes, PE, activity and sport, food and health, substance misuse and our new RSHP programme for teaching the core curriculum around relationships, sexual health and parenthood. We would strongly advocate parents taking the time to examine this resource in light of up and coming topics which will be covered across P1-P7. You can access this resource at <https://rshp.scot>

Literacy

Includes learning within reading, writing, listening and talking, as well as learning an additional language, as advised by the Scottish Government's 1+2 modern languages agenda. This encourages pupils to learn one core language and another supporting language; at Mid Calder Primary, pupils are taught French as their core language and Spanish as the additional.

Numeracy

Includes having the confidence and competence to use number, measure and data to solve practical problems in everyday contexts. Across all stages, children are supported to apply their mathematical thinking in real-life situations—such as managing money, measuring for cooking, interpreting information, and making decisions.

Religious and Moral Education

Includes exploring the world's major religions, as well as views that are non-religious. Your child will think about their own beliefs and values. Children learn about Christian practice in worship and the place of Christian action in the community. Children will also study other world religions in line with national guidelines. This part of the curriculum operates through class teaching, assemblies, outside visits and visitors to school. Any parent who wishes to exercise their right to withdraw their child from religious education/observance should inform the Head Teacher.

Sciences

Includes learning about the Planet Earth, Forces, Electricity and Waves, Biological Systems, Materials and Topical Science.

Social Studies

Includes developing understanding of the world, by learning about other people and their values, in different times, places and circumstances.

Technologies

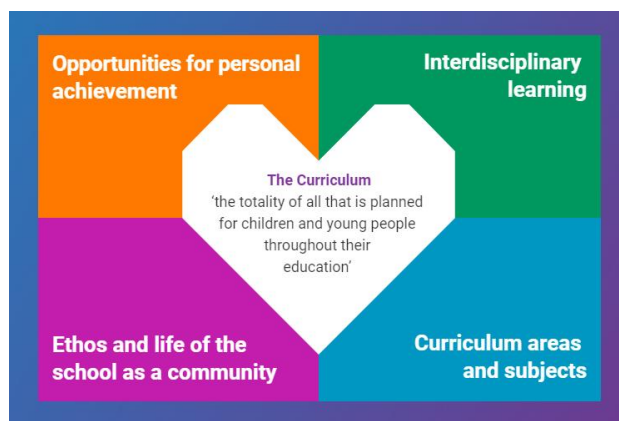
Includes business, computing science, food technology, textiles, craft, engineering, graphics and applied technologies.

More information about Curriculum for Excellence is available on the Education Scotland website <https://education.gov.scot/education-scotland/scottish-education-system/policy-for-scottish-education/policy-drivers/cfe-building-from-the-statement-appendix-incl-btc1-5/what-is-curriculum-for-excellence>

There is currently a review of Scotland's 3-18 Curriculum. You can find out more here: <https://blogs.glowscotland.org.uk/glowblogs/cices/>

Parents are kept informed by regularly newsletters, giving details of curriculum afternoons and parents' consultations, etc.

Building the Four Capacities in our learners and planning for learning across the Four Contexts:



Interdisciplinary Learning opportunities are child led whilst aiming to develop skills for real life, learning and work.

Our IDL focus' aim to develop our partnerships and understanding of our unique locality, whilst fostering our positive whole school community ethos. Pupils and staff will discuss the skills/knowledge and attributes being developed through the IDL approach, with appropriate curriculum area links. IDLs are planned alongside pupils, following their own interests/questions/route maps of learning. Regular evaluation and adaptations will take place with the children throughout the learning process, taking into account celebration of wider school achievement where possible. Therefore, creating successful learners, confident individuals, effective contributors and responsible Mid Calder Primary school pupils, who are ready for life, learning and work.

We greatly value real life learning and work based skills development, encompassed using national guidance from "Developing Young Workforce – Career Education Standard (3-18)". Our progressive Skills Builder Programme – Listening, Speaking, Problem Solving, Creativity, Staying Positive, Aiming High, Leadership and Teamwork ensure that the key essential skills are developed to prepare our young people for their futures.



More information about Curriculum for Excellence is available on the Education Scotland website <http://www.educationscotland.gov.uk/learningandteaching/thecurriculum>

Parents are kept informed by regular newsletters, class SWAYs and SEESAW (P1-P3), giving details of curriculum *Parent Pop-ins* and parents' consultations, etc.

4.2 : Instrumental Tuition

West Lothian Council's Instrumental Music Service provides instrumental music lessons to primary and secondary school pupils and opportunities for these pupils to play in one of the many bands and ensembles that perform regularly at a range of venues and events locally, nationally and internationally.

The Service is delivered in schools by professional instrumental music instructors who provide a structured and progressive music curriculum which is encapsulated in the four capacities of Curriculum for Excellence – to enable each child or young person to be a successful learner, a confident individual, a responsible citizen and an effective contributor. Lessons can begin from P5 onwards and are open to all pupils to access.

More information can be found here: <https://www.westlothian.gov.uk/article/32397/Instrumental-Music-Service>

4.3 : Use of the Internet



As a “Digitally Accredited” school within West Lothian, we strive to foster and develop technological skills across a plethora of digital platforms, which will equip our young people with the capabilities to meet the demands of life in our increasingly technological age. Digital approaches to learning and teaching are planned to allow our young people to share, capture and celebrate digital inclusion, using a variety of tools to motivate and engage our learning practices. This is an integral part of the curriculum which enables pupils to access information and resources on local and worldwide networks.

We teach children about internet safety and how to report any items that make them feel uncomfortable.

We ask parents to promote the responsible and safe use of the internet at home, including the use of social media if parents permit their children to access it.

West Lothian Education Services implements software to provide protection from inappropriate materials on the Internet. It must be recognised, however, that no protection can be absolutely guaranteed and, to this end, pupils must not actively seek inappropriate material and should report any items that make them feel uncomfortable.

As a school with access to the Anytime Anywhere Learning (AAL) network, we can connect netbooks and handheld devices to the internet. At present, our school follows a **Bring Your Own Device (BYOD)** approach, which allows pupils to bring personal digital devices such as tablets, laptops, or mobile phones to support their learning where appropriate.

Educational Use

All mobile devices/including Smart Watches/tablets/iPads will be collected by the class teacher at the start of the day. For P4-P7 learners, personal devices may be used in school **only when authorised by a member of staff** and for clearly defined educational purposes. Staff will direct when and how devices may be used in lessons to enhance learning, research, and collaboration. Staff with the learners will co-construct a safe use charter that learners agree to and sign up to. This will include -

- Respecting the privacy and rights of others
- Not accessing inappropriate content
- Not using devices for bullying, harassment, or disruptive behaviour

Any misuse of a personal device will lead to the device being removed.

Pupils bring personal devices to school **at their own risk**. The school cannot accept responsibility for loss, theft, or damage. Pupils are encouraged not to bring expensive devices unless necessary and to ensure their belongings are secure at all times.

West Lothian Council is currently reviewing its approach to pupils' use of personal mobile devices, including mobile phones, in light of emerging research, national guidance, and feedback from staff, parents, and pupils.

As a result:

- Policies and expectations may change during the academic year.
- Any updates will be clearly communicated to families in advance.

Our priority is to ensure that device use supports learning while safeguarding pupils' wellbeing, focus, and safety.

The authority has set out the following internet rules for pupils to minimise the possibility of accessing inappropriate materials or communications.

Internet Rules

When using the internet, we expect children:

- not to swear, use rude or threatening words,
- not to reveal their address or phone number or those of others,
- to remember that electronic mail (email) is not guaranteed to be private,
- not to use the Internet in such a way that would disrupt its use by others,
- not to try to find inappropriate material,
- to tell a member of staff if a page, picture or message is found that makes the child feel uncomfortable.

If these rules are not followed the child will not be allowed to use the Internet and the school may take further action.

Further information on safe use of the Internet is available at <https://www.thinkuknow.co.uk/>

4.4 : Assessment and Reporting

Assessment is an integral part of the teaching process and your child will be continually assessed during their school career. This assessment can be both formal and informal and takes many forms; observation, tests, pupil/teacher dialogue, written or spoken tasks and teacher judgement. The result of the assessment process allows teachers to form next steps in your child's learning.

It is the authority's policy to also carry out standardised testing in literacy and numeracy at P1-P7. These results form part of the overall assessment information about your child.

Information about your child's progress will be shared between home and school throughout the session. This will include parents' nights (usually one in Oct/Nov and one in March) and an annual report (usually given out towards end of June). The aim of the annual report is to provide details of your child's strengths, development needs and attainment within Curriculum for Excellence. Parents and children are welcome to comment on the annual report.

Parents are welcome to contact their child's school at any time if they have any questions or concerns regarding their child's progress.

4.5 : Supporting our Learners

Class teachers are continuously assessing the needs of pupils in their class. The authority provides access to Support for Learning staff and resources for pupils requiring additional support. Each school follows the principles of the Scottish Government's policy of "Getting it Right for Every Child", for more information see the Scottish Government website. We consult with parents and carers to ensure the needs of children are met.

Should your child require additional support in a particular area you are invited to discuss this with the class teacher.

This authority has a policy of inclusion. This promotes the placement into primary and secondary schools of pupils with significant needs.

Section 5 : Admission Procedures

5.1 : Admission Procedures

West Lothian is divided into catchment areas for primary and secondary schools. The catchment areas for all West Lothian Council schools are available online at www.westlothian.gov.uk

Each school is either denominational (linked to a particular religion) or non-denominational (not linked to any particular religion). All the denominational schools in West Lothian are Roman Catholic. Each home address has a catchment denominational school and a catchment non-denominational school, for both primary and secondary education.

The Pupil Placement section deals with all applications for pre-school and wraparound, and deals with applications for the August primary one (P1) and secondary one (S1) intakes. Schools deal with applications for other stages and for P1 and S1 after the pupils start school. To apply for a school, pre-school or wraparound place you must fill in an application form. You can get application forms

from schools, nursery schools, libraries, Council Information Service Offices and from the Pupil Placement Section.

To contact the Pupil Placement Section, e-mail pupilplacement@westlothian.gov.uk or phone 01506 280000. Information is also available on the Council website: <https://www.westlothian.gov.uk/article/32379/Apply-for-nursery-and-school-places>

5.2: New Entrants to P1

You can apply for a P1 place from the November of the year before your child is due to start school, and the places are allocated in March of the same year that your child is due to start school.

Application for admission of pupils to P1 for the August intake normally takes place in November and December of the preceding year. Details appear in local papers, Council Information Centres, in nursery schools and playgroups. Children will be invited to spend some time in school, usually in June, to meet their teachers and see their classroom.

5.3: Transfer from P7 to Secondary School

You can apply for an S1 place from the November of the year before your child is due to start secondary school. For more information on admission arrangements please see our website www.westlothian.gov.uk or contact the Pupil Placement:

<https://www.westlothian.gov.uk/article/32379/Apply-for-nursery-and-school-places>

or phone 01506 280000.

Transfer from P7 to Secondary School

Each home address has a denominational (Roman Catholic) and a non-denominational secondary school in their catchment area.

In November and December, parents of P7 pupils will receive a letter from the Pupil Placement Section indicating the catchment area secondary schools for their home address. The letter, which will be sent home with the child, asks parents to confirm their transfer intentions. It is generally assumed that P7 pupils transfer to their associated secondary school providing that their associated secondary school for the primary school they attend is also a catchment secondary school. The letter also advises parents of their right to make a placing request and how to do this. Information on placement requests is available from the Pupil Placement Section.

Transport assistance may be provided for children who cannot be placed in the catchment school. Information on this can be obtained from School Transport (telephone 01506 281951), (telephone 01506 280000) or from the Council website – www.westlothian.gov.uk

5.4 : Extra Curricular Activities

Breakfast Club:

Pupils can attend Breakfast club Monday-Friday. This runs between 8.00-8.30am. Pupils should aim to attend Breakfast Club before the end of this session to ensure they have adequate time to eat breakfast and settle themselves before beginning the school day.

After School Clubs:

After School Clubs are available to all pupils should they choose to opt into them. Sessions are run by either teachers, in their own time, or external agencies. Pupils should indicate their interest in clubs available when they are organised throughout the year. Some examples of clubs run during this session are netball, singing, dancing, art and football clubs. Please look for information on these clubs in newsletters or letters distributed during the school year. We aim to make all our afterschool clubs free to all pupils.

Section 6: Health & Safety and Pupil Welfare

6.1: Medication in Schools

Most pupils will at some time have a medical condition that may affect their participation in school activities. For many this will be short-term; perhaps finishing prescribed medication even though the child's doctor regards the child as fit to attend school. Others have medical conditions which, without help, could limit their access to education.

Parents have prime responsibility for their child's health and should provide schools with information about their child's medical condition.

Please tell the school if your child needs medication. Forms for any child requiring medicine to be taken during school time are available from the school office.

6.2: Emergency Contacts and Arrangements

It is essential that the school has the name, address and telephone number of an adult to be contacted in case of an accident or your child feeling ill. Please ensure records are kept up to date by notifying the school of any change of address and telephone number of your child's emergency contact.

Children will only be sent home early in special circumstances. The school will make every effort to contact you in such situations. Where there is no adult to receive the child, they will be supervised in school until such time as suitable arrangements are made. In the event of extreme weather conditions you may check the council website for information on any school closures.

All schools have a means of contacting parents and carers via text message using the 'GroupCall' system.

6.3: Meals and Milk

All pupils of nursery are entitled to 0.25 litres of milk daily free of charge. Children whose parents are in receipt of qualifying benefits may also receive milk free of charge. Milk is available to other primary pupils at a reduced cost.

The school dining area is organised as a self-service cafeteria. This area is supervised by members of staff. Children may have school meals regularly or on odd days when necessary. Children choose from three options each day. This usually includes a non-meat meal. A 3 coloured token system is used - Green- usually a packed lunch/sandwich option, Red - a hot two-course meal and Blue hot/non meat option. These are on display to allow the children to see the choices. The menu is available on the Council website. <https://www.westlothian.gov.uk/school-meals-menu>
If your child has special dietary requirements, please let the school know.

Currently all P1 – P5 children get free meals, and P6 - P7 children whose parents are in receipt of qualifying benefits, are entitled to free school meals. Other children can buy a school lunch ordered and paid through the iPayimpact system.

iPayimpact

West Lothian Council use an online system for paying for lunches/milk money etc where parents order and pay online in advance.

Some parents prefer their children to have a packed lunch and facilities are provided in the school for the eating of packed lunches.

Further information and application forms for free school meals and milk can be obtained from the school or from the Council's website: <https://www.westlothian.gov.uk/helpwithcosts>

6.4: Security

The school has a security system which allows all doors to be locked electronically once the children are in school. The locking system is released automatically if the fire alarm goes off. All visitors should report to the school office via the front entrance of the school, sign in and collect a visitor's badge. The school welcomes parents and carers but asks them to help to ensure the security of the school by reporting to the school office. *When seeking to discuss a school matter with a member of staff, please arrange a meeting at the school office at a convenient time.*

6.5: Photography

West Lothian schools have a photography policy which is in accordance with data protection and human rights legislation. Photographs taken for curricular, assessment, security, registration, training and development or travel reasons will not be used for any other purpose. All parents are asked to sign a consent form before any photographs are taken at the beginning of the school year.

Photography is helpful in publicising the success of the school and in promoting educational initiatives. From time to time members of the press and media are invited into school to cover events celebrating success. However, the views of parents who, for any reason, do not wish their children to appear in such photography will be respected at all times.

Photography by staff on school trips and visits may be used in the curriculum on the school 'SWAYS' and Newsletters. Photographs are also displayed within the school or at parents' evenings to illustrate the work of the school.

If photography is permitted, parents and guests should take care to avoid distracting pupils and the audience. They should observe any constraints imposed by school staff. Video or sound recording of a copyright musical or theatrical performance is normally forbidden and photography may also be restricted for reasons of child protection or out of respect for the rights and privacy of individuals. If so, photo-opportunities will, instead, be arranged before or after a performance or an event, if possible.

If unsure whether or not permission has been given by staff to record a particular performance or event, parents should ask the Head Teacher.

Class and individual or group photographs are annual school events. Parents are asked in advance whether or not they wish their children to be included in these events. Reputable commercial photographers are involved and the law allows them to retain the copyright in the photographs. The use of mobile phone cameras is prohibited in view of the risks inherent in such use, which include the existence and/or distribution of photographs contrary to the wishes, welfare and privacy of young people and adults.

If you have any concerns about photography, please tell the school.

6.6: Child Protection Guidelines

The safety of your child at school is a priority for the authority. All West Lothian schools follow the Lothian Child Protection guidelines. <https://westlothianhscp.org.uk/article/37654/Child-Protection>

6.7: Playground Supervision

Supervision is provided in the school grounds at 08:30 in the morning. Children are supervised during intervals and their lunch break. If children have an accident or any other problem in the playground, they report initially to the supervisor who will take the necessary action. When pupils are at school, the responsibility for their safety rests with the Local Authority. The Head Teacher and staff undertake this responsibility on behalf of the Local Authority.

6.8: Transport

West Lothian Council will provide transport assistance for all primary pupils living more than 1.5 miles from their designated school. The provision of transport for pupils attending special schools and classes is not subject to these limitations, but is based on individual pupil need. Further information can be obtained from School Transport (telephone 01506 775291) or from the West Lothian Council Website: <https://www.westlothian.gov.uk/schooltransport>

Parents who choose to send their children to a school out with their catchment area, will be responsible for any extra travelling expenses incurred.

6.9: Car Park

In the interests of safety parents **must not use the school car park for parking or to access the school.** At no time should children be in the car park.

6.10: Requested Early Release of Pupil

There are occasions when pupils wish their children to be released from school at other than normal closing times, to enable them to keep a dental or medical appointment outside school, or for other reasons. In all cases, a written request must be made for early release. Parents must then call at the school office and their child will be brought to them. Parents must sign their children in and out of the school.

On no account should a child leave school premises on their own.

6.11: Data Sharing

On occasion, schools will make data available to partners and also academic institutions to carry out research and statistical analysis. In addition, schools will provide our partners with information they need in order to fulfil their official responsibilities.

The collection, transfer, processing and sharing of data is done in accordance with the Data Protection Act.

Section 7 – Communication, Feedback, concerns, complaints and comments

7.1 Communication

Please see the school Communication Policy and Communication Table for information on all the ways we communicate with you and how you can communicate with us.

7.2 Feedback, Concerns and Complaints.

If you have feedback, concerns or complaints regarding the service you are receiving, these can be addressed by contacting the Head Teacher in the first instance. This can be done by either a phone call to the school office – 01506 882092 or via email – wlmidcalder-ps@westlothian.org.uk

If you are dissatisfied with the school response you should contact:

West Lothian Education Customer Services:

<https://intranet.westlothian.gov.uk/article/73489/Education-Customer-Services>

7.3 Comments

At our school, we are deeply committed to providing every child with the very best learning experiences in a supportive, inspiring, and nurturing environment. We continually strive to improve and grow, and the feedback we receive from parents and carers plays an important role in this journey.

Positive comments and feedback, while never expected, are always greatly appreciated by our staff. Teaching and supporting young people is a rewarding profession, but it can also be demanding. Hearing kind words or recognising the efforts of our team can have a meaningful impact on staff morale, motivation, and wellbeing. A simple comment acknowledging a lesson, a supportive gesture, or an aspect of school life can make a real difference.

Your feedback also helps us to understand what is working well and reinforces the practices and values we want to nurture across the school. It allows us to celebrate successes, share good practice, and continue building a positive school community.

We warmly welcome any comments you may wish to share about your child's experiences, the support you have received, or the work of the school more broadly. Together, we can ensure that our school remains a place where children thrive and achieve their full potential.

Thank you for your continued support.